



35350 206th street
Miller, SD 57362

Product Information



WWW.SHARPIND.COM

TABLE OF CONTENTS

Page 1: Standard & Flip Up Door
Page 2: Double Door
Page 3: Poly Door
Page 4: Filter Door
Page 5: Painted Steel Door
Page 6: Fire Door
Page 7: Window Styles
Page 8-9: Frame Styles
Page 10-11: Locks And Accessories
Page 12: Sharp Latch
Page 13: "Lou" Drinker
Page 14-15: Plastic Paneling
Page 16: Frequently Asked Questions
Page 17: About Sharp Industries

QUICK CONTACT

Sharp Industries, LLC
35350 206th street
Miller SD 57362

Joseph:

605-204-0647
joseph@sharpind.com

Randy:

605-204-1057
randy@sharpind.net

Visit our website at www.sharpind.com

INDUSTRIES SERVED

- Hog Production Facilities
- Cattle and Dairy Industry
- Poultry Industry
- Fertilizer Storage Plants
- Commercial Building Construction
- Car Washes
- Chemical Plants
- Any Corrosive and Wet Environment
- Swimming Pools
- And More!

Standard & Flip Up Door

FEATURES

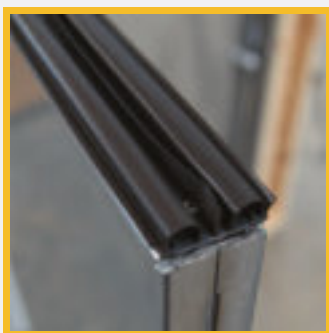
- 100% 300 series stainless steel
- 1-3/4" thick door with 20 Ga. skins
- 3-1/2", 16 Ga. stainless steel jambs
- Full perimeter weather-stripping
- Standard or custom door sizes, call to discuss
- Dead bolt lockset option
- Stainless steel lockset insert, reinforced 12 Ga. stainless steel plates
- Flange built into one side of frame with flange built into trim pieces on other side. Benefit is there is no need to trim after installation.
- Stainless steel hinges with bearings, reinforced 12 Ga. stainless steel plates
- Fully insulated 2-part polyurethane closed cell material injected in door which repels moisture, mold, and bacteria from spreading
- Door is prepped for lockset by boring a 2-1/8" diameter hole with a 2-3/4" backset a 1" edge bore
- Customizable for your latch preference



Standard Door



Stainless Steel Hinges



Weather-Stripping

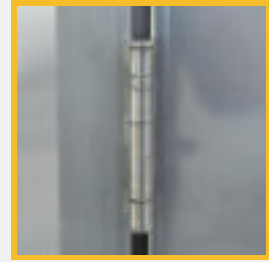


Flip Up Door

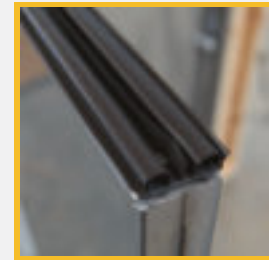
Double Door



Stainless Steel Hinges



Weather-Stripping



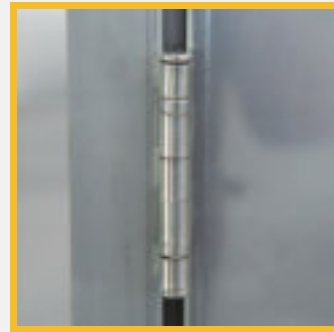
FEATURES

- 100% 300 series stainless steel
- 4-way universal swing
- 1-3/4" thick door with 20 Ga. skins
- 3-1/2", 16 Ga. stainless steel jambs
- Full perimeter weather-stripping
- Dead bolt lockset option
- Standard or custom door sizes, call to discuss
- Stainless steel lockset insert, reinforced 12 Ga. stainless steel plates
- Four stainless steel hinges with bearings, reinforced 12 Ga. stainless steel plates
- Fully insulated 2-part polyurethane closed cell material injected in door which repels moisture, mold, and bacteria
- Door is prepped for lockset by boring a 2-1/8" diameter hole with a 2-3/4" backset and 1" edge bore
- Customizable for your latch preference

Poly Door

FEATURES

- Polypropylene Copolymer panel
- 100% 300 series stainless steel frame, hinges, and panel retainers
- 16 Ga. stainless steel jambs
- 2" thick door
- Flange built into one side of frame with flange built into trim pieces on other side. Benefit is there is no need to trim after installation
- 4 stainless steel hinges with bearings, reinforced 12 Ga. stainless steel plates
- Custom door sizes available. Please call for details
- Barn latch specifically made for Poly doors



Stainless Steel Hinges



Filter Door

FEATURES

- 100% 300 Series Stainless Steel
- Fully insulated 2-part polyurethane closed cell material injected in door which repels moisture, mold and keeps bacteria from spreading
- 1-3/4" thick door with 20 Ga. skins
- 16 Ga. Stainless steel fully welded threshold and jamb
- Full perimeter weather-stripping
- Flange built into one side of frame with flange built into trim pieces on other side. The benefit is that there is no need to trim after installation
- Four stainless steel hinges with bearings, reinforced 12 Ga. stainless steel plates
- Heavy Duty 3 point latching system
- Custom assemblies available in a wide range of sizes, configurations and jamb depths



Painted Steel Door

FEATURES

- Painted Steel Door
- 4-way universal swing
- 1-3/4" thick door with 20 Ga. Skins\
- Full perimeter weather-stripping
- Variety of paint colors available
- Standard or Custom door sizes
- Stainless steel lockset insert, reinforced 12 Ga. stainless steel plates
- Four stainless steel hinges with bearings, reinforced 12 Ga. stainless steel plates
- Fully insulated 2-part polyurethane closed cell material injected in door which repels moisture, mold, and bacteria
- Door is prepped for lockset by boring a 2-1/8" diameter hole with a 2-3/4" backset and 1" edge bore
- Dead bolt lockset option
- Custom door sizes available, call to discuss



ADDITIONAL PICTURES



Fire Door

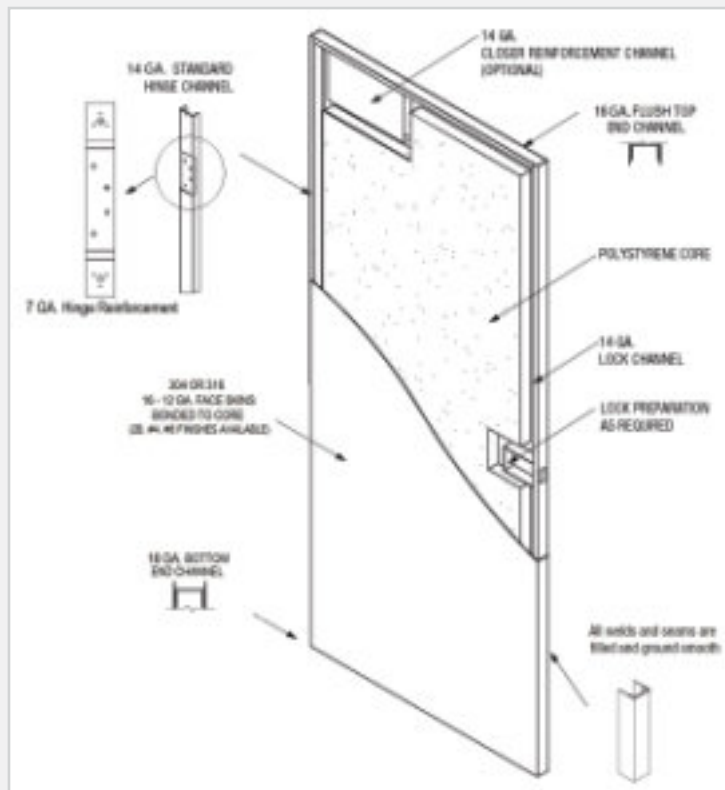
FEATURES

- UL and WH labels are available
- Fire rating up to 3 hours are available
- Fire rated lites available with stainless trim
- Door and frame are constructed from 300 series stainless steel. Ideal for tough corrosive environments
- Door cores are made with a durable polystyrene or phenolic impregnated honeycomb permanently laminated to the inside face
- Can be prepped for a variety of latch options
- Door conforms to NAAMM-HMMA commercial standards and federal specifications
- The fire door has a variety of options and customizations available. Please call us to discuss your needs

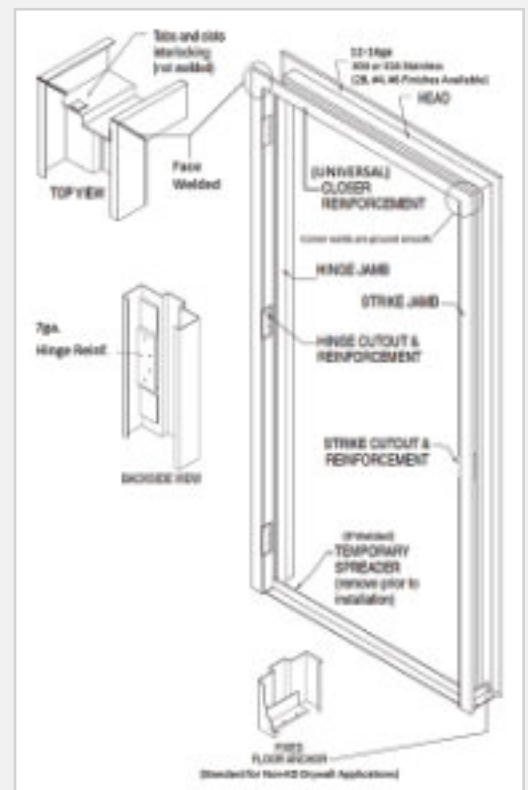


ADDITIONAL INFORMATION

Stainless Steel Door



Face Welded Stainless Steel Frame



STAINLESS STEEL WINDOW FRAME

- 100% 300 series stainless steel
- Very Rigid Construction
- Stainless steel window frames are available in 16" x 16", 22" x 30", 4" x 20", and 5" x 25"
- Consists of two pieces of 1/8" tempered glass with 1/2" dead air space
- Custom window sizes and variations are available, call to discuss

ALUMINUM WINDOW FRAME

- Very Rigid Aluminum Construction
- Aluminum window frames are available in 22" x 30" and 22" x 36"

VINYL WINDOW FRAME

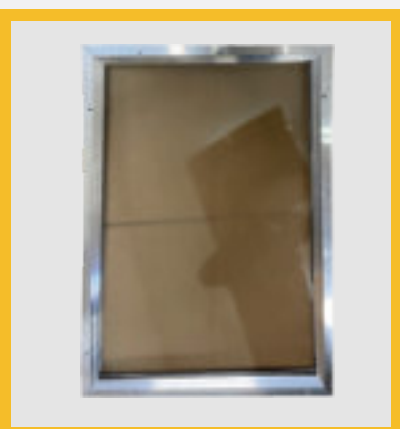
- Very Rigid Vinyl Construction
- Vinyl window frames are available in 16" x 16", 22" x 30" and 22" x 36"
- We offer solid, blinded, wired, or vented frame options
- Consists of two pieces of 1/8" tempered glass with 1/2" dead air space
- Custom window sizes and variations are available



Stainless Steel Frame



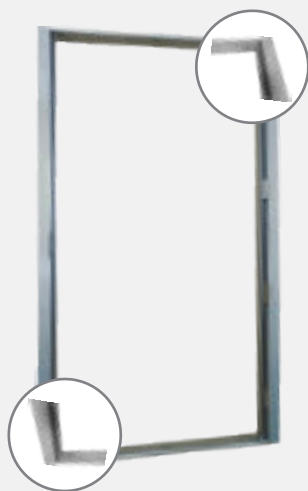
Vinyl Frame



Aluminum Frame

FLANGED FRAME

- Very easy to Install
- Universal Swing
- Comes with a trim kit to trim out after door installation
- Installs into virtually any wall system
- Made from 100% 16 Ga. 300 series stainless steel
- Pre-Installed durable weather stripping
- Rough Opening is 2 inches wider and 2-1/4" inches taller than door size. Example - a 36" x 80" door will have a R.O. of 38" x 82-1/4"



Top Right



Bottom Left



1/2" FLANGELESS FRAME

- Universal Swing
- Good fit for any concrete or masonry wall system
- Made from 100% 16 Ga. 300 series stainless steel
- Pre-Installed durable weather stripping



Top Left



Bottom Right



TSH FRAME

- Very Rigid Construction
- Made from 100% 16 Ga. 300 series stainless steel
- Pre-Installed durable weather stripping
- Good fit for any concrete or masonry wall system
- Designed to virtually eliminate water and snow intrusion



Top Left

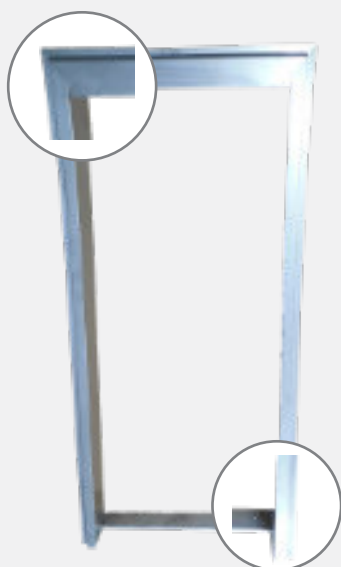


Bottom Right

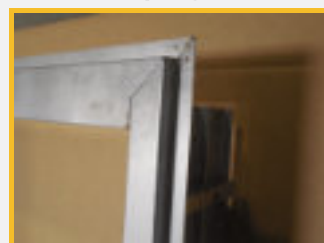


BRICKMOLD FRAME

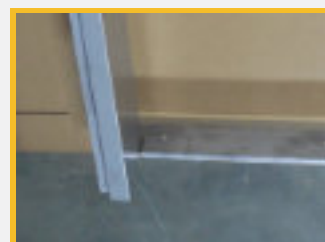
- Very Rigid Construction
- Made from 100% 16 Ga. 300 series stainless steel
- Pre-Installed durable weather stripping



Top Right



Bottom Left





Dead Bolt Keyed Lock



Passage Knob



Keyed Door Knob



Privacy Door Knob



Privacy Lever



Passage Lever



Keyed Lever



Universal Sharp Latch



Indicator X Turn



Keypad (Alarm Lock) Grade 1



Keypad (Schlage) Grade 2



Wall Bumper



Door Stop



Flip Up Door Stop



Panic Bar



Latch Guard



Out Swing Sharp Bolt



Closer Mount



Push-Pull Plate



In Swing Sharp Bolt

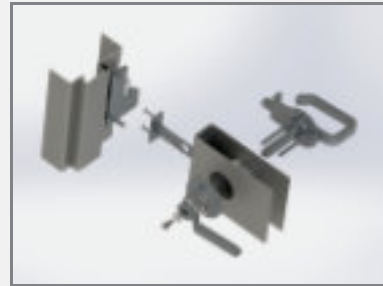


Wind Chain

Sharp Latch

FEATURES

- Easy to install
- Made with 100% 300 series stainless steel
- Designed to last a lifetime
- Installation doesn't require any modification to the door
- Will fit into industry standard bore holes
- Designed to be universal. Will work in both a left swing and a right swing door



Sharp Latch (Grade 1)



Sharp Latch (Grade 2)



"Lou" Drinker

FEATURES

- Wean to finish
- #300 Stainless Steel
- Water is controlled by vacuum type valve
- Saves water! Saves medication!
- All areas of drinker exposed to pigs is stainless steel.
- Units have a center 1.5" drain, which is operated from the top of the unit.

Available in 16" and 24"



“Paneltim” and “Rotecna” Plastic Paneling

Sharp Industries offers “Paneltim” and “Rotecna” plastic paneling, sizing and welding services. Paneltim and Rotecna are polypropylene (PPCO) products produced to meet the highest hygiene requirements for livestock housings, as the panels are welded all around for easy cleaning and maintenance.

FEATURES

- Can be used for barn doors, manure pit covers, shower stalls, and robot room enclosures for dairy applications
- Easy cleaning and maintenance
- Plastic panels make an excellent gating and fencing option
- Durable and highly resistant to the corrosive environment of livestock facilities
- Custom sizing is available

Please visit www.paneltim.com for more information.



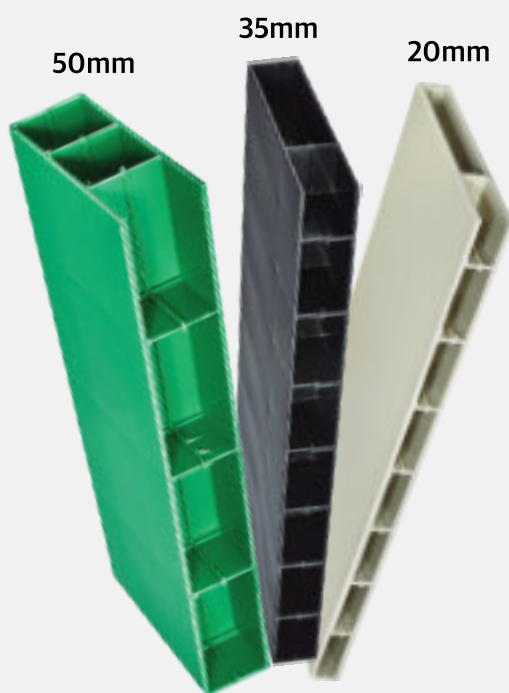
Pit Cover

“Paneltim” and “Rotecna” Plastic Paneling

Thicknesses Available:

- 20mm - 3/4"
- 35mm - 1 3/8"
- 50mm - 2"

All sizes available in all colors listed.



Poly Door made with “Paneltim”
Plastic Paneling

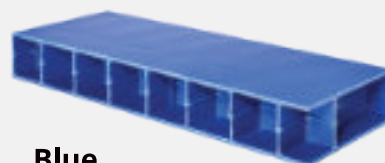
COLOR OPTIONS



Beige



Green



Blue



Black



White



Grey

Please visit www.paneltim.com for more information.

Frequently Asked Questions

CAN THE DOORS BE CUSTOMIZED?

Absolutely! A wide variety of custom options are available ranging from custom door sizes to custom latch configurations.

WHAT IS THE R-VALUE OF THE DOOR?

The door has an R-Value of approximately 14.

IS THE DOOR MADE FROM STAINLESS-STEEL?

Yes, all metal parts of the door are manufactured from stainless steel.

WHAT GRADE OF STAINLESS STEEL ARE THE DOORS MADE FROM?

All of the metal parts of the door are made from high quality 300 series stainless steel

DO YOU SELL DIRECT TO THE END USER?

No, we only sell to dealers. Please contact Sharp Industries and we'll gladly help you find a dealer near you.

DO YOU SELL ANY OTHER DOOR BESIDES A STAINLESS STEEL DOOR?

Yes, we also offer polypropylene doors, steel doors, stainless steel frames, many different locks & accessories and more. Please contact Sharp Industries or visit shapind.com for more information.

DO YOU HAVE AN ONLINE PRESENCE?

Yes, please check out our website at www.sharpind.com.

ABOUT SHARP INDUSTRIES

Based in the Midwest, Sharp Industries is one of the leading manufacturers and suppliers of a wide range of steel entry door solutions. We are a valued and trusted partner to many building professionals, dealers, and building owners. We value the trust of our customers and go to great lengths to help them achieve success. It is our goal to build long-term relationships with our customers.

It is through our dedication to excellence, our manufacturing strength and outstanding customer service that we will continue to lead and set standards. Our products are engineered to last a lifetime, designed for easy installation, and will perform flawlessly under demanding and corrosive conditions. We guarantee our products to be built entirely from the highest quality materials (bought from industry leading suppliers) to give our customers the peace of mind that they are making the right decision.

Our state-of-the-art facility includes technically innovative fabricating equipment that allows us to build our products to exacting specifications. Our team of dedicated professionals are here to help and strive for quality (from engineering all the way to shipping). The Sharp Industry Advantage means we can offer a wide variety of solutions for your custom needs as well as an extensive off-the-shelf selection.

HAVE QUESTIONS?

If you have any questions while looking through this booklet, please contact us utilizing the information below:



35350 206th street
Miller, SD 57362

www.sharpind.com

Joseph:

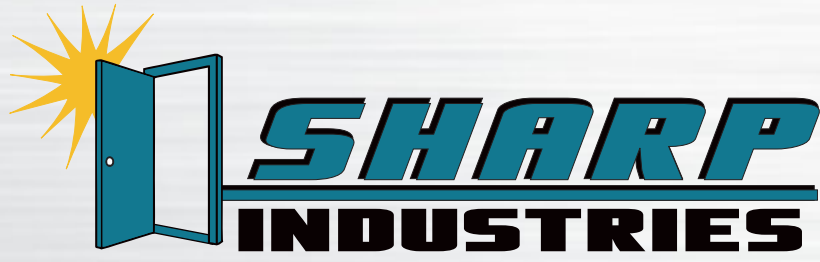
605-204-0647

joseph@sharpind.com

Randy:

605-204-1057

randy@sharpind.net



35350 206th street
Miller, SD 57362